



CREATIVE CAREERS

Activity Book 1



Welcome

Welcome to your Bournemouth Symphony Orchestra's CREATIVE CAREERS Activity Booklet 1. Through this booklet you will increase your understanding of roles in a creative organisation such as the BSO.

Introduction

Please research and answer the questions below:

1a. What is an Orchestra?

1b. How many people on average make up an orchestra?

1c. How many people do you think it takes to run an Orchestra?



1d. Apart from funding, what two ways can we get money to put on other concerts?



1e. How do people find out about our concerts?

Activity 1

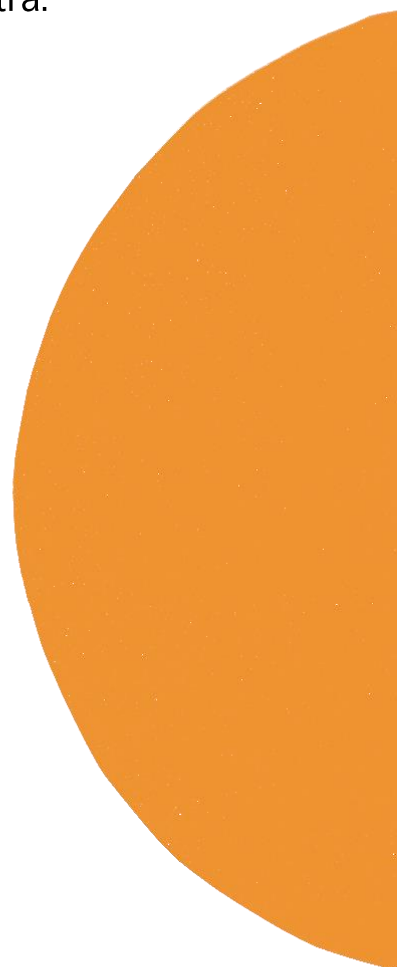
Role play activity: 'Why should we give money to run your orchestra?'

You work for the Fundraising department. Your job is to ask people to donate to us and approach charitable organisations called Trusts and Foundations. Act it out with someone, one of you works for the Fundraising department and one is a potential donor. Make a list of three reasons why they should donate money to the orchestra:

1.

2.

3.



Activity 2

How do we put on a good show so that the audience have a brilliant time? Take into consideration the music, the venue, the show, stage management etc. Mind map your ideas below.



Create your own company

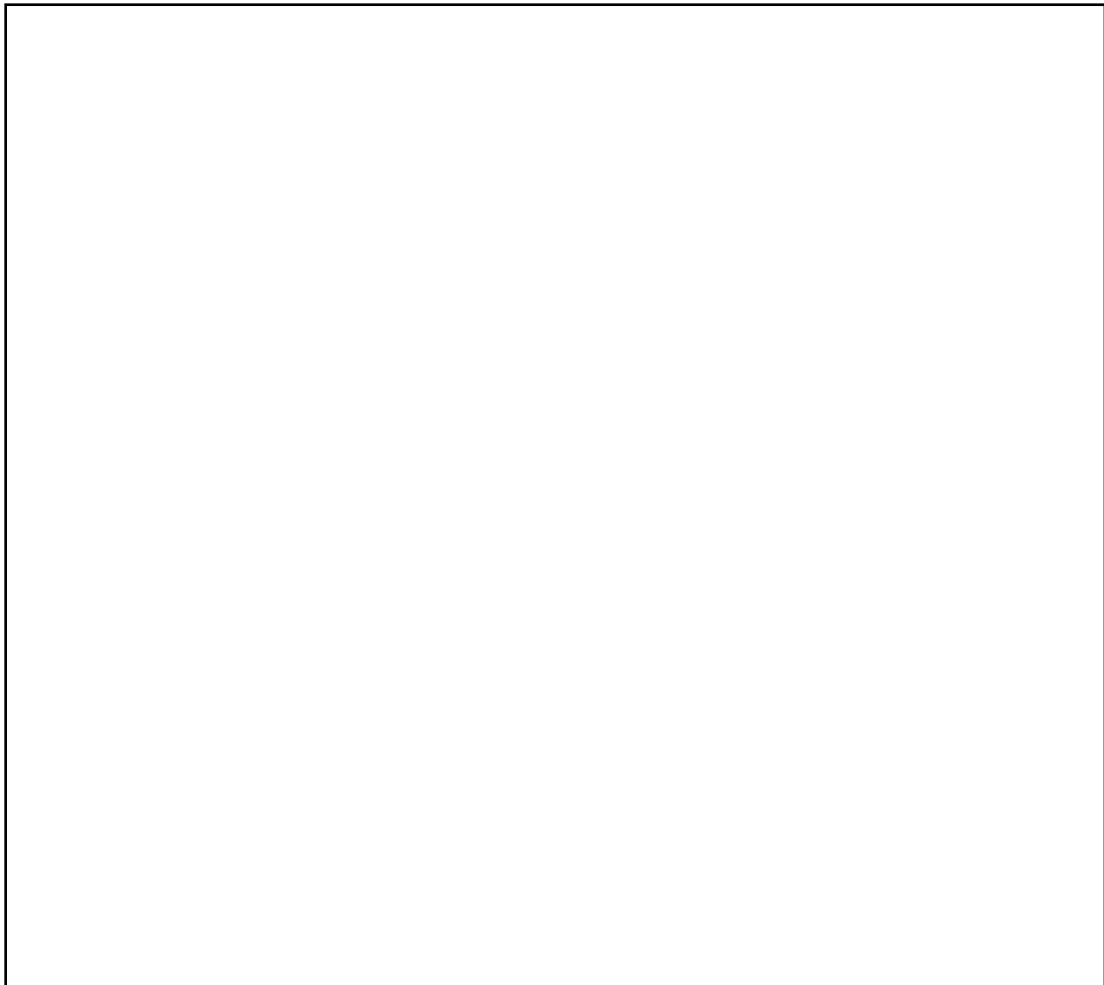
You are now going to create your own arts company. Firstly, you will need to do two things:

- Choose a company name
- Create a company logo

Company Name

.....

Company Logo



Choosing our music

Below are the beginning of repertoire lists. You need to complete the music for each of the lists. Once you have done this, choose which repertoire list you will have for your concert. Answer the questions below.

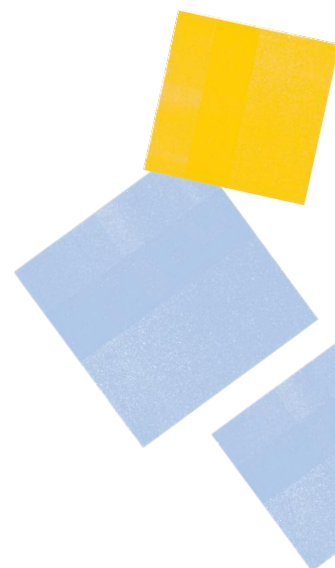
List A – Jazz inspired classics	List B – Film Theme Music	List C – Music to dance to
1.Rhapsody in Blue, George Gershwin	1.Titanic, James Horner	1.Dance of the Knights, Prokofiev
2.Symphonic Dances, Bernstein	2.The Hobbit, Howard Shore	2.Dance of the Sugar Plum Fairies, Tchaikovsky
3.	3.	3.
4.	4.	4.
5.	5.	5.
6.	6.	6.

Which list are you choosing?

Why have you chosen this list?

What was your favourite piece of music?

What order will you run your programme in?



Answers:

1a. It's a group of musicians with many different instruments who play pieces of music together

1b. 70

1c. On average there's between 20-40 people who work behind the scenes to run the orchestra

1d. Ticket sales and fundraising

1e. Marketing – this can be through social media, flyers, posters, programmes and many other creative resources.

Activity 1

Some ideas of what you could've said but there are no wrong answers:

Because we deliver world-class music to thousands of people; we give concerts for schoolchildren where it can be their first experience of a live symphony orchestra; we enhance the culture in areas across the UK; we get into the hearts of the communities we serve...

Activity 2

Some ideas of what you could've said but there are no wrong answers:

Need music that our audience will enjoy; the venue needs to be accessible to all; the venue needs to provide a suitable atmosphere that fits in with the music chosen; any additional features such as special lighting or presenting; the experience around the concert is important such as being able to buy food/drink or merchandise